

2PM Type Connector

www.yetech.ru

Russia Standard 2PM Type

2PM series circular electrical connectors mainly adopt Russian connector technology. It is widely used for electrical connection and signal transmission between electrical equipment in railway system, trams and trolley bus etc. Its unique structure can make up for the shortcomings of many other similar connectors, making it more convenient and scientific to use. The cable plug and panel socket are threaded connection. The panel socket has a glass sintered sealed socket (M) and a glass sintered sealed wall socket (C), which can simultaneously meet the use requirements in special environments such as vacuum, sealing, and high temperature. Now there are mainly 2PM14/18/22/24/27/30/33/36 and other specifications, its special structure and performance have won the general recognition of the market. At the same time, it can be matched and interchanged with original parts of Russian 2PMT and 2 series.



Product Parameters

Connector type: Cable plug /panel socket

Orentation: Straight/Angled

Connection method: Thread connection

Shell Material: Aluminum alloy

Contact Material: Copper with silver/gold plated

Shell Size: 2PM14/18/22/24/27/30/33/36/39...

Pin number: 4/7/8/10/19/20/22/24/32...

Termination: Solder

Mating Cycles: 500 times

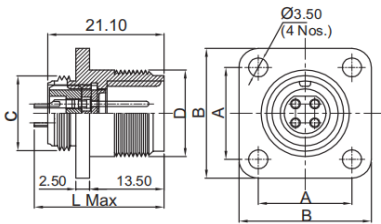
Working Voltage: ≥400V

Working Current: 5-40A

Insulater: bakelite/PBT

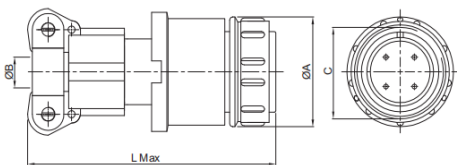
Operating temperature: -60 - +200

Insulation resistance: Normal ≥20MΩ Moistheat ≥2MΩ Contact resistance: 0.5-2.5mΩ

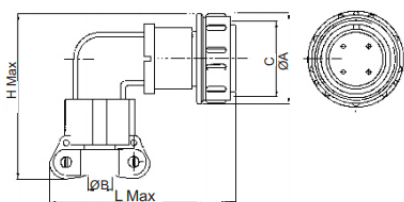


SHELL SIZE	14	18	22	24	27	30	33	36	39	42	45
A	17	20	23	26	29	31	32	35	37	40	43
B	24	27	30	33	36	38	40	43	46	49	52
C (LH) THREAD	M14X1.0	M18X1.0	M22X1.0	M24X1.0	M27X1.0	M30X1.0	M33X1.0	M38X1.0	M39X1.0	M42X1.0	M45X1.0
D (RH) THREAD	M16X1.0	M20X1.0	M24X1.0	M27X1.5	M30X1.5	M33X1.5	M38X1.5	M39X1.5	M39X1.5	M45X1.5	M48X1.5

For connectors with ø 1.0 and ø 1.5mm contacts dimension L=26.00 max.
For connectors with ø 2.0 and ø 3mm contacts dimension L=28.00 max.



SHELL SIZE	14	18	22	24	27	30	33	36	39	42	45
A MAX	22	25	29	32	35	39	42	45	48	51	54
B (MIN) CABLE ENTRY DIA	6.5	10.5	14.50	16.50	18.50	20.50	23.00	23.00	24.50	30.50	30.50
C (RH) THREAD	M16X1.0	M20X1.0	M24X1.0	M27X1.5	M30X1.5	M33X1.5	M36X1.5	M39X1.5	M39X1.5	M45X1.5	M48X1.5
L MAX	53.50	53.50	56	62.50	62.50	62.50	57.50	67.50	67.50	67.50	67.50



SHELL SIZE	14	18	22	24	27	30	33	36	39	42	45
A MAX	22	25	29	32	35	39	47	45	48	51	54
B (MIN) CABLE ENTRY DIA	6.5	10.5	14.50	16.50	18.50	20.50	23.00	23.00	24.50	30.50	30.50
C (RH) THREAD	M16X1.0	M20X1.0	M24X1.0	M27X1.5	M30X1.5	M33X1.5	M36X1.5	M39X1.5	M39X1.5	M45X1.5	M48X1.5
L MAX	51.5	58	62	64	67	71	71	71	74	81	88
H MAX	37.5	41	47.5	50	53.5	57.5	50.5	63.5	56.5	69.5	72.5

ORDER INFORMATION

Shell Size: 2PM14/18/22/24/27/30/33/36/39/42/45

K: Female J: Male

Number of contacts: 4/7/8/10/19/20/22/24/32 ...

2PM 14 K 4 Q A 2

1 : Gold plated pin
2 : Silver plated pin

Q: Straight cable plug W: Angled cable plug
Z: Flange receptacle
ZQ: Flange receptacle with tail attachment

A: Shielded tail attachment
B: Unshielded tail attachment

Chinese:

Russian:

2PM 18 K/J 4 Q B 1/2

2 /2 18 4 / 5 A / 1/2 (B)



2PM - Series
 18 - Shell Size
 K/J - Female/Male
 4 - Number of contacts
 Q - Straight cable plug
 B - Unshielded tail attachment
 1/2 - Gold/Silver plated pin

2 /2 - Series
 18 - Shell Size
 - Straight cable plug
 / - Unshielded/Shielded tail attachment
 4 - Number of contacts
 / - Male/Female
 5 - Combination No.
 A/B - Gold/Silver plated pin
 1/2 - 100 / 200
 B - All climate performance

2PM 18 K/J 4 Q A 1/2

2 /2 18 4 / 5 A / 1/2 (B)



2PM - Series
 18 - Shell Size
 K/J - Female/Male
 4 - Number of contacts
 Q - Straight cable plug
 A - Shielded tail attachment
 1/2 - Gold/Silver plated pin

2 /2 - Series
 18 - Shell Size
 - Straight cable plug
 / - Unshielded/Shielded tail attachment
 4 - Number of contacts
 / - Male/Female
 5 - Combination No.
 A/B - Gold/Silver plated pin
 1/2 - 100 / 200
 B - All climate performance

2PM 18 K/J 4 W B 1/2

2 /2 18 4 / 5 A / 1/2 (B)



2PM - Series
 18 - Shell Size
 K/J - Female/Male
 4 - Number of contacts
 W - Angled cable plug
 B - Unshielded tail attachment
 1/2 - Gold/Silver plated pin

2 /2 - Series
 18 - Shell Size
 - Angled cable plug
 / - Unshielded/Shielded tail attachment
 4 - Number of contacts
 / - Male/Female
 5 - Combination No.
 A/B - Gold/Silver plated pin
 1/2 - 100 / 200
 B - All climate performance

2PM 18 K/J 4 Z 1/2

2 /2 18 4 / 5 A / 1/2 (B)



2PM - Series
 18 - Shell Size
 K/J - Female/Male
 4 - Number of contacts
 Z - Flange receptacle
 1/2 - Gold/Silver plated pin

2 /2 - Series
 18 - Shell Size
 - Flange receptacle
 4 - Number of contacts
 / - Male/Female
 5 - Combination No.
 A/B - Gold/Silver plated pin
 1/2 - 100 / 200
 B - All climate performance

2PM 18 K/J 4 ZQ B 1/2

2 /2 18 4 / 5 A / 1/2 (B)



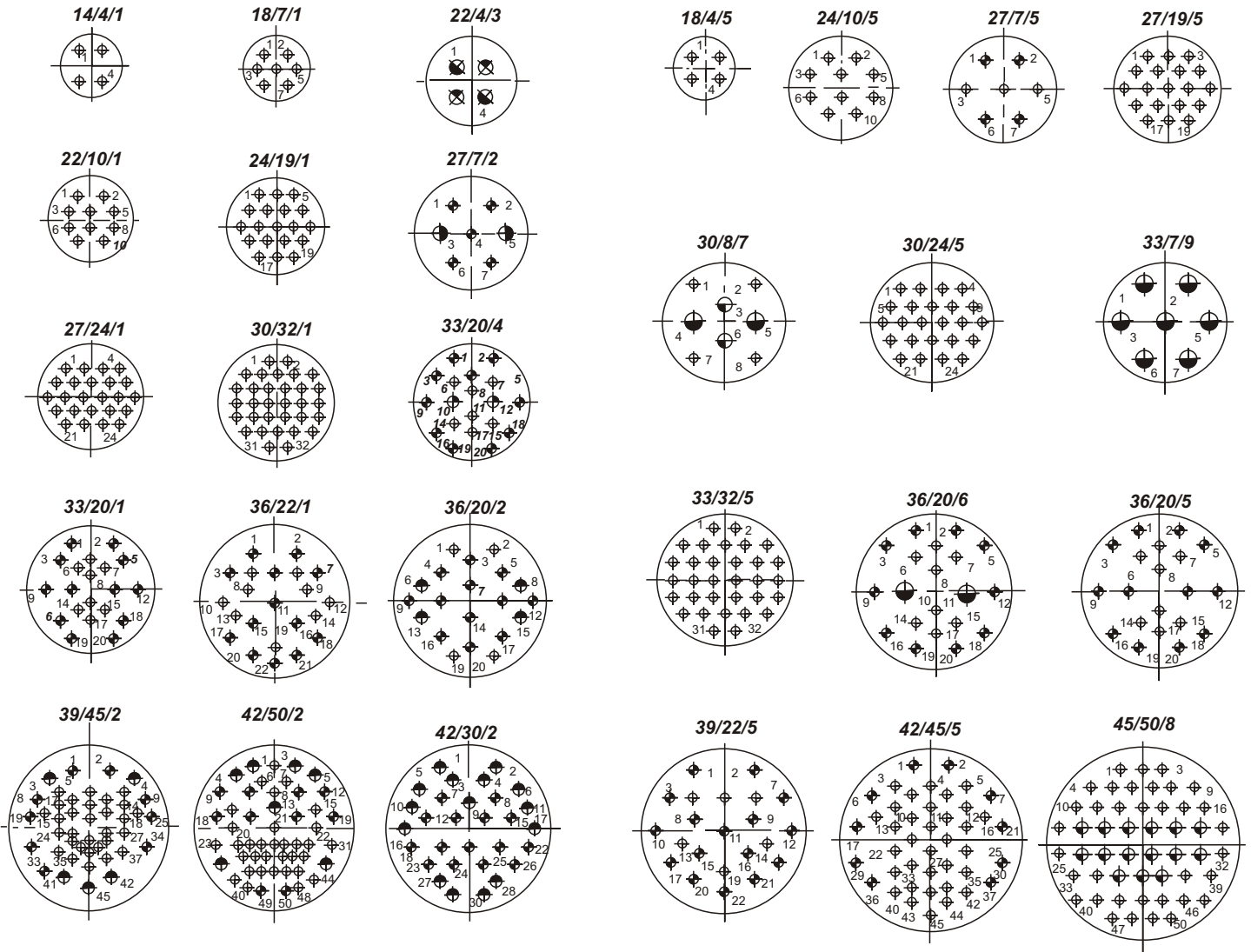
2PM - Series
 18 - Shell Size
 K/J - Female/Male
 4 - Number of contacts
 ZQ - Flange receptacle with tail attachment
 B - Unshielded tail attachment
 1/2 - Gold/Silver plated pin

2 /2 - Series
 18 - Shell Size
 - Flange receptacle with tail attachment
 / - Unshielded/Shielded tail attachment
 4 - Number of contacts
 / - Male/Female
 5 - Combination No.
 A/B - Gold/Silver plated pin
 1/2 - 100 / 200
 B - All climate performance

Contact layout diagrams for 2PMT

Contact layout diagrams for 2

Ex: Shell Size / No. of Contacts / Combination No.



Contact configuration in insert									
For 2PMT size.									
Sr. No.	Inserts			Contacts					
	Shell Size	No. of Contacts	Combination No.	1.0	1.5	2.0	2.0 A	3.0	3.0 A
1	14	4	1	4	-	-	-	-	-
2	18	7	1	7	-	-	-	-	-
3	22	4	3	-	-	2	-	2	-
4	22	10	1	10	-	-	-	-	-
5	24	19	1	19	-	-	-	-	-
6	27	24	1	24	-	-	-	-	-
7	30	32	1	32	-	-	-	-	-
8	33	20	4	18	-	-	-	2	-
9	39	45	2	40	5	-	-	-	-
10	42	50	2	43	7	-	-	-	-
For 2 size.									
1	18	4	5	-	4	-	-	-	-
2	24	10	5	-	10	-	-	-	-
3	27	19	5	-	19	-	-	-	-
4	30	8	7	-	4	-	2	-	2
5	30	24	5	-	24	-	-	-	-
6	33	32	5	-	32	-	-	-	-
7	36	20	6	-	18	-	-	-	2
8	42	45	5	-	45	-	-	-	-
9	33	7	9	-	-	-	-	-	7
10									